

S 43 SX III

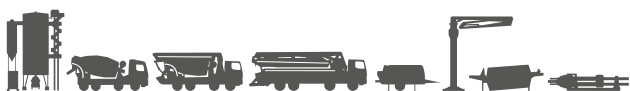
Truck-mounted concrete pump



Mercedes-Benz Actros

MADE IN GERMANY
by SCHWING-Stetter 

Vertical reach		42.3 m
Concrete output	max.	162 m ³ /h
Pressure on concrete	max.	85 bar



RECORD BREAKING ENGINEERING

The S 43 SX III from SCHWING

Ease without compromises

S 43 SX III Truck-mounted concrete pump

The 5-section boom of the S 43 SX III is extremely robust with incredible flexibility for different concrete placing jobs thanks to the Z-folding tip section with its 270° opening angle. The combination of proven SCHWING technology with continuous innovation has resulted in reliability, performance and ease of use without compromise. High pump power at low engine speed combined with the legendary durability of the ROCK valve enable the lowest operating and maintenance costs in this class. The S 43 SX III: unmatched flexibility and profitability.

Boom

The turret can be rotated 370° in both directions and the tip section can rotate 270° meaning that even the most demanding placement situations can be mastered effortlessly. Just two of the many advantages of the boom on the new S 43 SX III.



Pump kit

Only the SX outriggers by SCHWING allows the longstroke pump kit P2525 with 2.50 m long pumping cylinders to be used in this class of machine. Advantages: even smoother operation and 15% less strokes than with pump kits otherwise available in this class.



Open hydraulic system

The open hydraulic system of the S 43 SX III converts the engine power efficiently into pump power with little loss. Thus, the usual practice output rates can be realized with a fuel-saving engine speed of just over 1000 rpm.



SX outriggers

The SX outriggers developed by SCHWING combines high torsional rigidity and excellent stability with minimum space requirement. The protected piston rod and internally laid hydraulic cables prevent damage and reduce service costs. At the same time, the SCHWING SX outrigger is the only system which allows the installation of a low-wear long stroke pump kit P2525.



Concrete valve

The legendary low wear ROCK valve with its optimal geometry for low-friction concrete flow ensures low service and operating costs. Being fast and easy to clean, the S 43 SX III is quickly ready for the next job.



Supply control

The water box can be filled and emptied, and the water pump, agitator, spray hose, high pressure jet wash and compressor, all controlled via the standardised supply control. This is the standard for all SCHWING truck-mounted concrete pumps for greater clarity and ease of operation.



Remote control SC 30

The light weight, easy to use and comfortable SC 30 helps minimise fatigue, allowing the operator to focus on the job for extended periods. The powerful batteries guarantee an operating time of at least 8 hours.



VECTOR control

The machine operator can inspect machine data, operating conditions and settings on S 43 SX III, changing various parameters, all through the intuitive VECTOR control. The integrated diagnostic system ensures safe operation and also reminds the operator when maintenance is necessary.

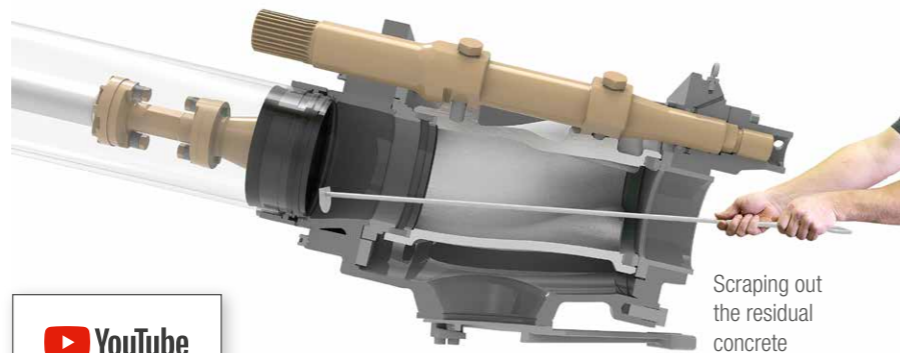


Advantages and benefits in detail

The ROCK

Faster clean with less water.

Due to its straight design, in comparison to other concrete valves, the ROCK valve is easier and quicker to clean. It also provides a direct view into the delivery cylinder and of the pumping pistons. The pump kit can therefore be cleaned easily and conveniently within just two strokes. This saves water and reduces the time needed for cleaning.



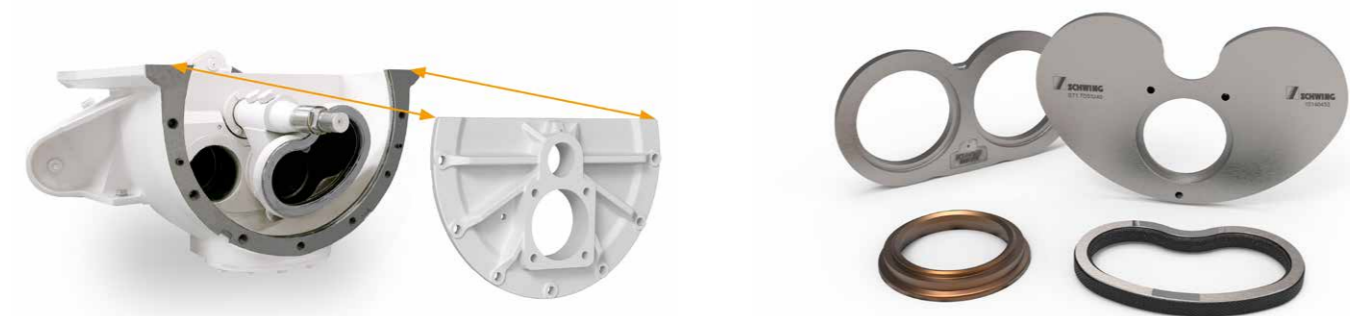
Intelligent wear protection.

The wear in the concrete valve is particularly high as the concrete is fed into the outlet at high pressure. In order to minimize this wear, at the most heavily loaded point of the ROCK concrete does not rub on steel, but rather on concrete. This is because the intelligent design of the ROCK leads to the formation of a concrete triangle after each shift. Protected by this concrete layer, the ROCK has a significantly longer service life than other concrete valves. For noticeably more profit per m³.



Easy maintenance.

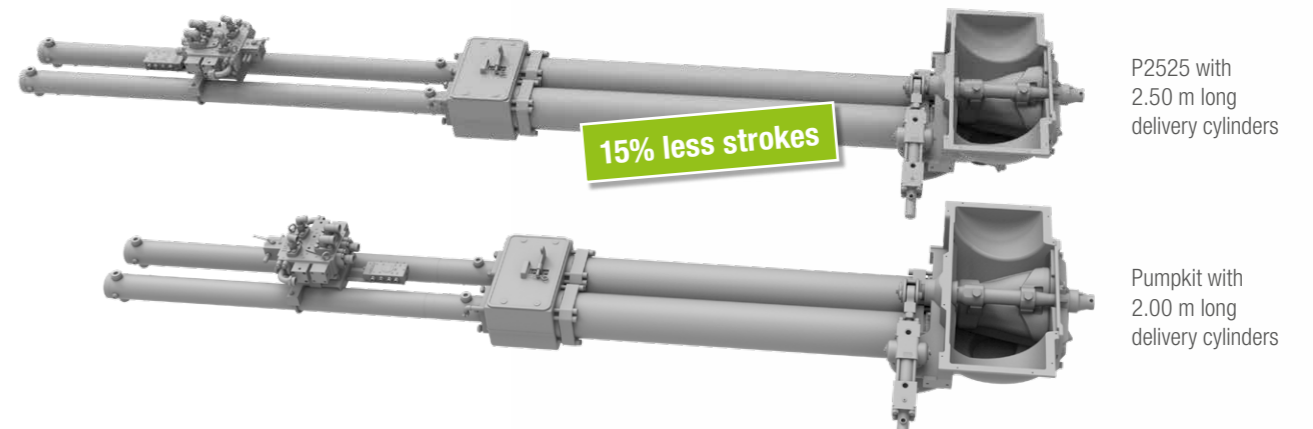
The ROCK valve not only has a significantly longer service life than other concrete valves, it is also easier to maintain. After removing the housing cover, the wear parts are easily accessible and can be replaced quickly and safely. Time-consuming adjustment work is not required after replacement. And the number of wearing parts at 15 with the ROCK valve is just half as high as with other concrete valves. The maintenance of the ROCK valve: simple, fast and safe.



The long-stroke pump kit P2525

Less wear, more profit.

Only the SX outrigger from SCHWING enables the installation of a pump kit with 2.50 m long delivery cylinders in this class. For a standard practice delivery rate of almost 60 m³/h, the long stroke pump kit P2525 requires no more than 8 strokes per minute. The wear costs of the S 43 SX III are thus reduced to an unrivaled low level and ensure significantly more profit per m³.



The boom

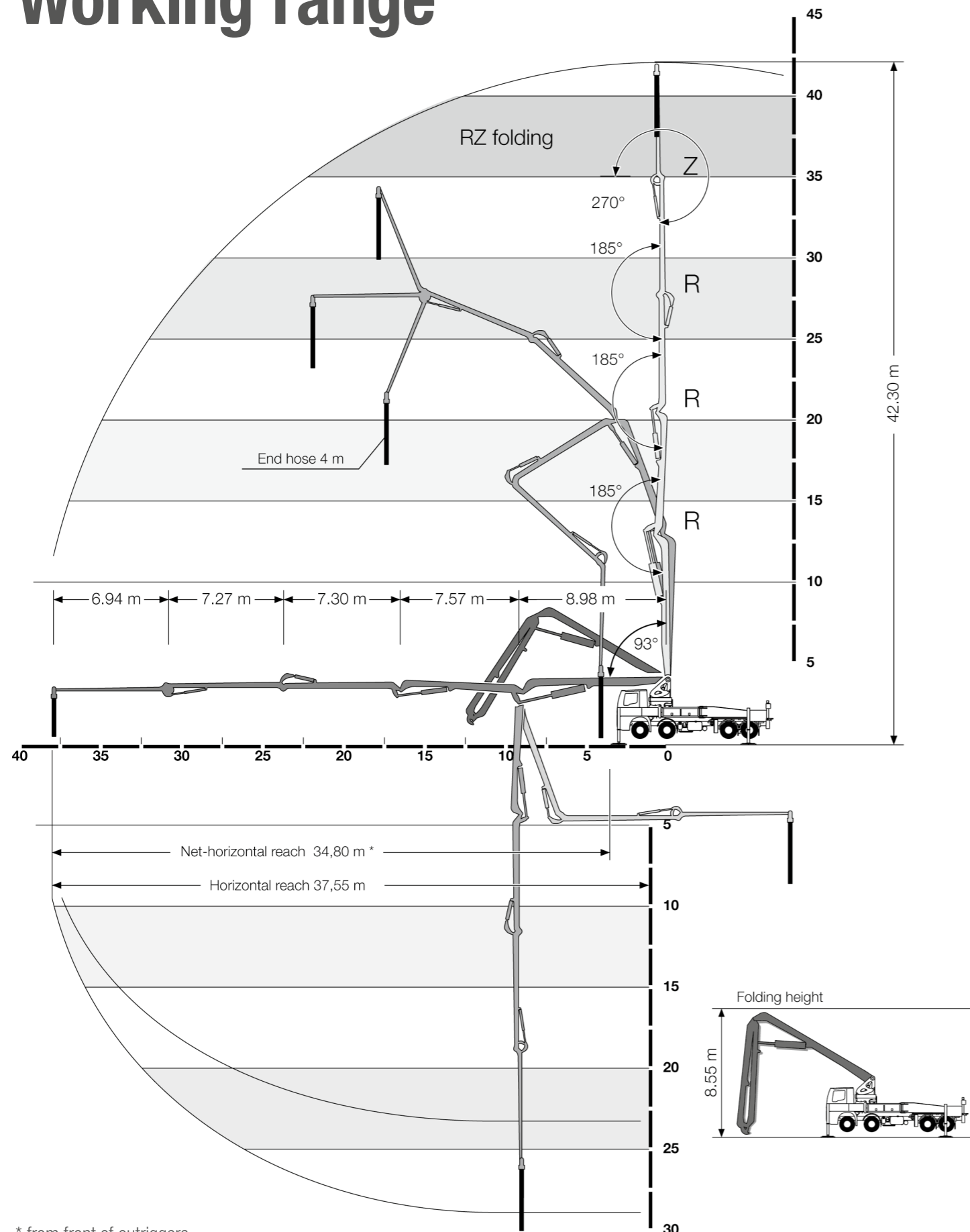
More rotation for quicker positioning.

The turret of other truck-mounted concrete pumps in this class can often only be rotated in one direction by 365°. This is not the case for the S 44 SX III from SCHWING: its turret can be rotated in both directions by 365°, thus providing significantly more flexibility and options in use.

2 x 365°



Working range



* from front of outriggers

Technical data

Performance

Pump kit		P 2023-110/75	P 2023-110/75	P 2525
Drive	l/min	535	636	636
Delivery cylinders	mm	230 x 2,000	230 x 2,000	250 x 2,500
Concrete output max.	m ³ /h	136	161	162
Pressure on concrete max.	bar	85	85	85
Stroke rate max.	1/min.	27	32	22
Concrete valve		B-ROCK	B-ROCK	B-ROCK

Hydraulic system

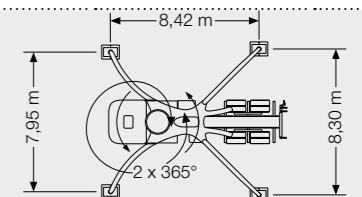
Design		open system
Hydraulic tank	l	548

Boom

		43 RZ
Delivery line		DN 125
Length of end hose	m	4.00 (Option: 1.00 m + 3.00 m)
Vertical reach	m	42.30
Reach depth	m	29.90
Horizontal reach	m	37.55
Net horizontal reach	m	34.80 (from front of outriggers)
Number of boom sections		5
Height of the inflexion points	m	4.24 / 13.22 / 20.79 / 28.09 / 35.36
Slewing range		2 x 365°
Folding height	m	8.55

Support

Outrigger width, front	m	7.95
Outrigger width, rear	m	8.30
Outrigger load, front	kN	240
Outrigger load, rear	kN	240



Chassis (examples*)		Mercedes-Benz Actros 4140	Mercedes-Benz Actros 4140
Exhaust emission standard		EURO 2	EURO 3
Axles configuration		8x4	8x4
Wheelbase	mm	5,800	5,800
Length	mm	11,503	11,503

Miscellaneous

Water tank	l	610
------------	---	-----

* other chassis possible



SCHWING concrete pumps. Efficiency as standard.



SCHWING
Stetter

SCHWING GmbH
Heerstrasse 9-27 · 44653 Herne, Germany
Fon +49 23 25 - 987-0 · Fax +49 23 25 - 72922
www.schwing-stetter.com · info@schwing.de

Stetter GmbH
Dr.-Karl-Lenz-Strasse 70 · 87700 Memmingen, Germany
Fon +49 83 31 - 78-0 · Fax +49 83 31 - 78 275
www.schwing-stetter.com · info@stetter.de

Subject to technical and dimensional modifications. Illustrations are non-binding. The exact standard specification, the scope of delivery and the technical data are detailed in the offer.