

# DH46-C3

**SHANTUI**  
VALUE THAT WORKS

BULLDOZER  
SERIES

ENGINE MODEL	CUMMINS QSX 15
GROSS POWER	380KW(510HP)
OPERATING WEIGHT	RS: 56000KG

LET'S MAKE  
CONSTRUCTION EASIER



**SHANTUI CONSTRUCTION MACHINERY CO., LTD.**  
ADDRESS: No. 58, G327 Highway Jining City, Shandong, CHINA  
TEL: +86-537-2909369 FAX: +86-537-2311219  
EMAIL: trade@shantui.com WEB: www.shantui.com



[www.shantui.com](http://www.shantui.com)

# DH46-c3 TECHNICAL PARAMETERS

## BULLDOZER SERIES

**SHANTUI**  
VALUE THAT WORKS

### ENGINE

Engine	Cummims QSX 15
Emission	U.S. EPA Tier 3, EU Stage IIIA
Rated revolution	1800rpm
Gross power	380kW(510hp)
Net power	343kW(460hp)
No. of cylinder-bore×stroke	6×137mm×169mm
Displacement	15L
Max. torque	2365Nm@1400rpm
Cooling system	Smart temperature-controlled fan

### DRIVE SYSTEM

Drive system	Independent dual-circuit electric control hydrostatic drive, intelligent matching of speed-load, "steplless" variable speed, mono-lever control of travel, speed and steering; steering with load, pivot steering, work flexibly, high efficiency, easy for maintenance	
System overflow pressure	43500kPa	
Traveling speed	Forward	0~11km/h
	Backward	0~11km/h
Max. theoretical traction force	720kN	
Steering	Independent drive of track at both sides to ensure the full power output for pivot steering and steering with load	
Brake	Regular closed multi-disk brake	
FINAL DRIVE	Double-reduction final drives of spur gear and planetary gear	

### CHASSIS SYSTEM

Type	Pivot, equalizing beam suspended type, semi-rigid structure
Track shoe type	Single grouser
Track gauge	2260mm
Width of track shoe	610mm/660mm/710mm
Track grounding length	3532mm
Track grounding area	21545cm <sup>2</sup>
Number of track shoe	40 pcs/side
Grounding pressure (standard configuration)	120kPa
Number of carrier roller	2 pcs/side
Number of track roller	7 pcs/side
Pitch	260MM

### VOLUME

Fuel capacity	920L
Coolant liquid capacity	73L
Engine oil capacity	45-49L
Hydraulic oil tank (travel)	370L
Hydraulic oil tank (work)	43L/single side
Final drive	8L
Transfer case	6L

### OPERATING WEIGHT

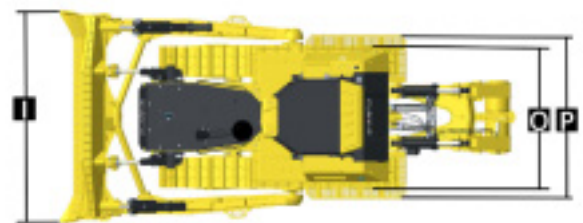
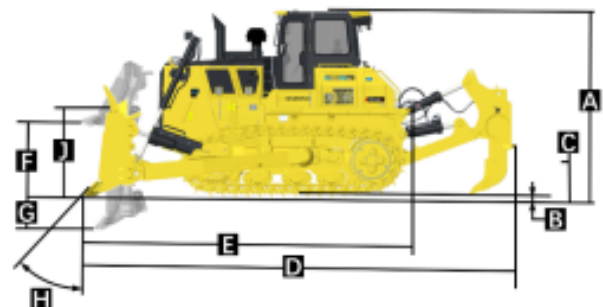
Operating weight	56000kg
------------------	---------

### BLADE

Blade type	Rock Blade
Blade capacity	13.7m <sup>3</sup>

### DIMENSION

	RS
A Machine height	3990mmO
B Track grouser height	87mm
C Ground clearance	680mm
D Machine length (with ripper)	9325mm
E Machine length (without ripper)	7085mm
F Max. lifting height of blade	1460mm
G Max. digging depth of blade	660mm
H Digging angle of blade	53°±3°(deg.)
I Blade width	4320mm
J Blade height	1950mm
Blade tilt height	1140mm
O Width from end of left track shoe to end of right track shoe (standard)	2870mm
P Width from end of left footplate to end of right footplate (standard)	3322mm



### RIPPER

TYPE	Single Shank ripper
Weight	3728kg
Q Ripping Depth of Ripper	1245mm
R Lifting Height of Ripper	1056mm
S Length of Ripper(Maximum Subsoiling Position)	2475mm
T Width of Ripper	1490mm
U Tilt Angle(Maximum Lift Position)	37.5°

