

320 HP

SD32W

High-efficiency for mining and more

- ▶ Engine model: Cummins NTA855-C360S10
- ▶ Rated power: 235 kW/2000 rpm
- ▶ Operating weight: 38 t

Product features

The third largest among Shantui's powerful lineup of heavy-duty dozers, the SD32W is a beast that really rocks in tough working conditions such as rocky or frozen earth environments. It comes with a rock-type blade and tracks giving it the nimbleness it needs to perform with great efficiency when adapting to such harsh conditions. It is one of our best-selling models for mining uses. It comes equipped with a hydraulic drive system with hydraulic control technology and an advanced structure, which provides reliable performance and convenient and flexible operation.



SHANTUI

VALUE THAT WORKS

Shantui Construction Machinery Co., Ltd.

ADDRESS:

No. 58, G327 Highway
Jining City, Shandong, CHINA

TEL: +86-537-2909369

FAX: +86-537-2311219

EMAIL: trade@shantui.com

320 HP

SD32W

Technical specifications:

Minimum ground clearance: 500 mm

Minimum turning radius: 3.8 m








Operating weight: 38 t

Gradeability: 30°

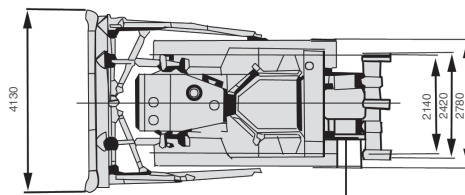
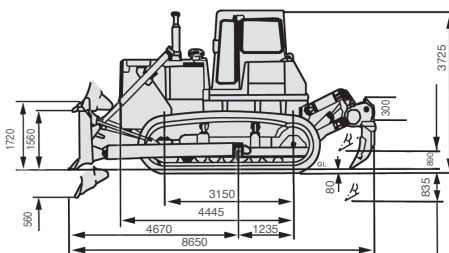
Ground pressure: 0.107 MPa

Track gauge: 2140 mm

SD32W

	ENGINE	Model & type	Cummins NTA855-C360S10; In-line, water-cooled; 4-cycle, overhead valve direct injection, turbocharged diesel		
		Rated revolution	2000 rpm		
		Rated power	235 kW		
		Cylinder number	6-139.7 x 152.4 mm (bore x stroke)		
		Piston displacement	14.010 L		
		Min. fuel consumption	245 g/kW-h		
		Maximum torque	1440 N·m@1400rpm		
	POWER TRANSMISSION SYSTEM	Torque converter	3-element, 1 stage, 1 phase		
		Transmission	Planetary gear, multi-disc clutch, power shift, forced lubrication		
		Main drive	Spiral bevel gear, splash lubrication, single-stage speed reduction		
		Steering clutch	Lubricated, multi-disc, spring loaded, hydraulically separated, hydraulic control		
		Steering brake	Lubricated, floating band, foot brake with hydraulic booster		
		Final drive	2-stage speed reduction of spur gear, splash lubrication		
	TRAVEL SPEED	Gear	1st	2nd	3rd
		Forward	0~3.6 km/h	0~6.6 km/h	0~11.5 km/h
		Reverse	0~4.4 km/h	0~7.8 km/h	0~13.5 km/h
		Type	Swing type of sprayed beam, suspended structure of equalizer bar		
	UNDERCARRIAGE SYSTEM	Carrier rollers	2 each side		
		Track rollers	7 each side (single flange 5, double flange 2)		
		Track type	41 each side		
		Width of track shoes	560 mm		
		Pitch	228.6 mm		
	HYDRAULIC SYSTEM	Maximum pressure	14 MPa		
		Pump type	Gear pump		
		Discharge (at revolution of 2000 rpm)	355 (1795 rpm) L/min		
		Bore of working cylinder × no. (double-acting type)	140 mm × 2		
	BLADE	Blade type	Straight-tilt		
		Dozing capacity	10 m ³		
		Blade width	4130 mm		
		Blade height	1590 mm		
		Maximum drop below ground	560 mm		
		Maximum tilt adjustment	1000 mm		
		Weight of blade	5074 kg		
	RIPPER (OPTIONAL)	Maximum digging depth of 3-shank ripper	842 mm		
		Maximum lift above ground	883 mm		
		Weight of 3-shank ripper	3802 kg		
		Maximum digging depth of single ripper	1250 mm		
		Maximum lift above ground	955 mm		
		Weight of single ripper	3252 kg		

OVERALL DIMENSIONS Straight-tilt blade



▶ THE SPECIFICATIONS ARE SUBJECT TO CHANGE WITHOUT NOTICE. THE PICTURES MAY INCLUDE OPTIONS. THE ACTUAL COLOR & APPEARANCE OF THE PRODUCT MAY DIFFER FROM WHAT IS SHOWN.